



Driving better performance with CDP Analytics

November 2016

**Enhanced
data access**

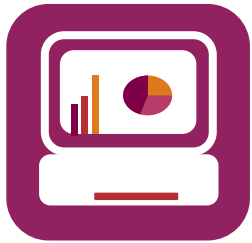


**Benchmark
against peers**



**Accelerate
leadership**





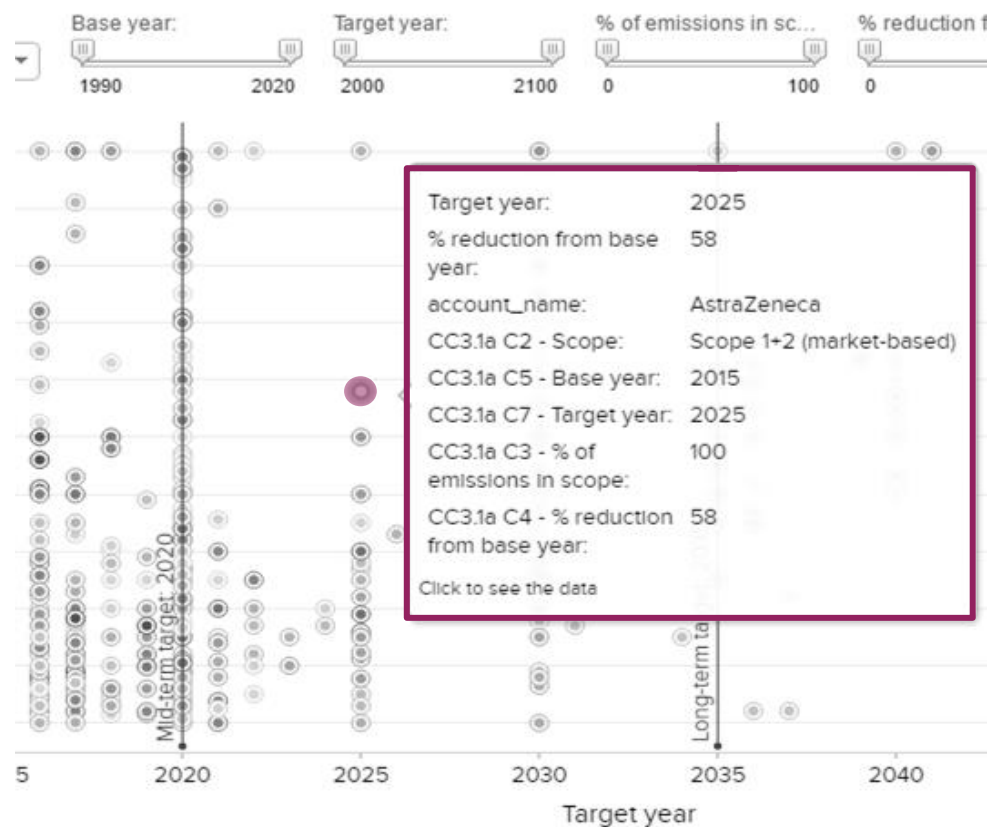
Some of the greatest value of the CDP disclosure process comes after a company has submitted the questionnaire. Reviewing, internalizing, and acting upon insights gleaned from its own response and those of its peers are some of the most critical ways to use CDP data. To better facilitate this process, CDP has introduced the **Analytics tool**, available for climate and water.

The climate change Analytics tool draws data from all public responses each year, and distills the information into eight dashboards, including **Targets, Emissions and emissions management, Energy production and consumption, Risks and opportunities, Supply chain, and Verification**. The dashboards provide high-level snapshots of companies' standings relative to peers, and highlight areas where companies can focus efforts for the greatest return against sustainability goals.



Interactive Charts

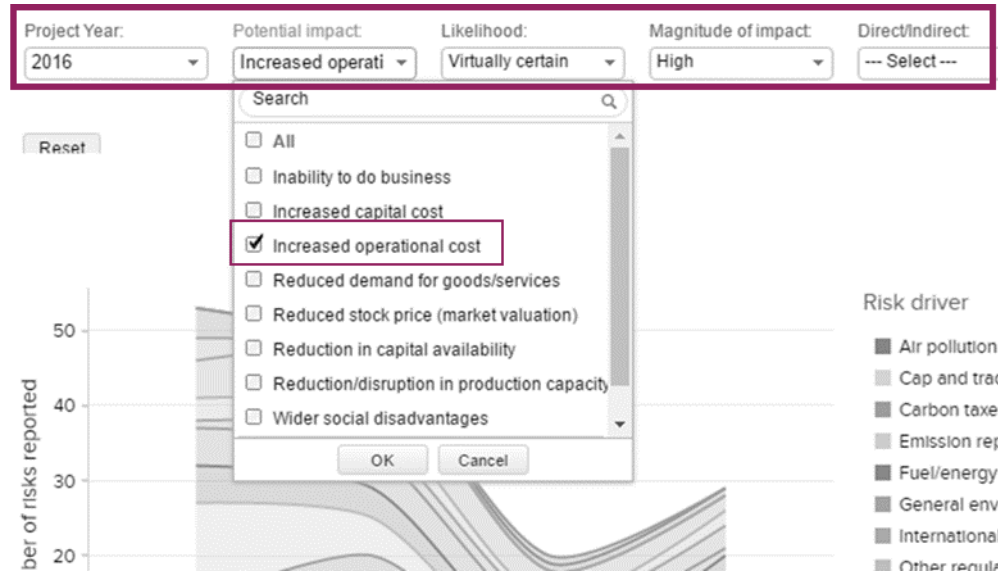
Drill down and zoom in to view data behind each point on each chart.





Dynamic Filters

Toggle the dynamic filters to pinpoint specific data.

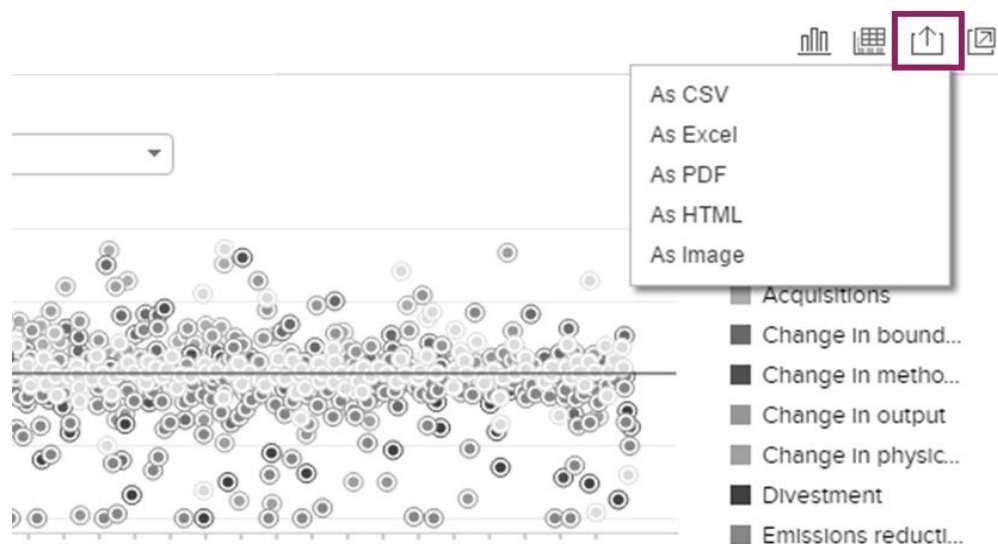


The screenshot shows the RS Analytics Tool interface with several filters applied: Project Year: 2016, Potential impact: Increased operati..., Likelihood: Virtually certain, Magnitude of impact: High, and Direct/Indirect: --- Select ---. A search dropdown menu is open, listing various risk drivers. The option "Increased operational cost" is selected and highlighted with a red box. Other options include "All", "Inability to do business", "Increased capital cost", "Reduced demand for goods/services", "Reduced stock price (market valuation)", "Reduction in capital availability", "Reduction/disruption in production capacity", and "Wider social disadvantages". A "Reset" button is visible on the left, and "OK" and "Cancel" buttons are at the bottom of the dropdown. A legend on the right lists risk drivers such as "Air pollution", "Cap and trad", "Carbon taxes", "Emission rep", "Fuel/energy 1", "General envi", "International", and "Other regulat".



Easy Export

Export the selected data to your preferred file formats.



The screenshot shows a scatter plot with a legend on the right. The legend includes items like "Acquisitions", "Change in bound...", "Change in metho...", "Change in output", "Change in physc...", "Divestment", and "Emissions reducti...". An export menu is open, listing options: "As CSV", "As Excel", "As PDF", "As HTML", and "As Image". The "As CSV" option is highlighted with a red box. A legend on the right lists risk drivers such as "Air pollution", "Cap and trad", "Carbon taxes", "Emission rep", "Fuel/energy 1", "General envi", "International", and "Other regulat".